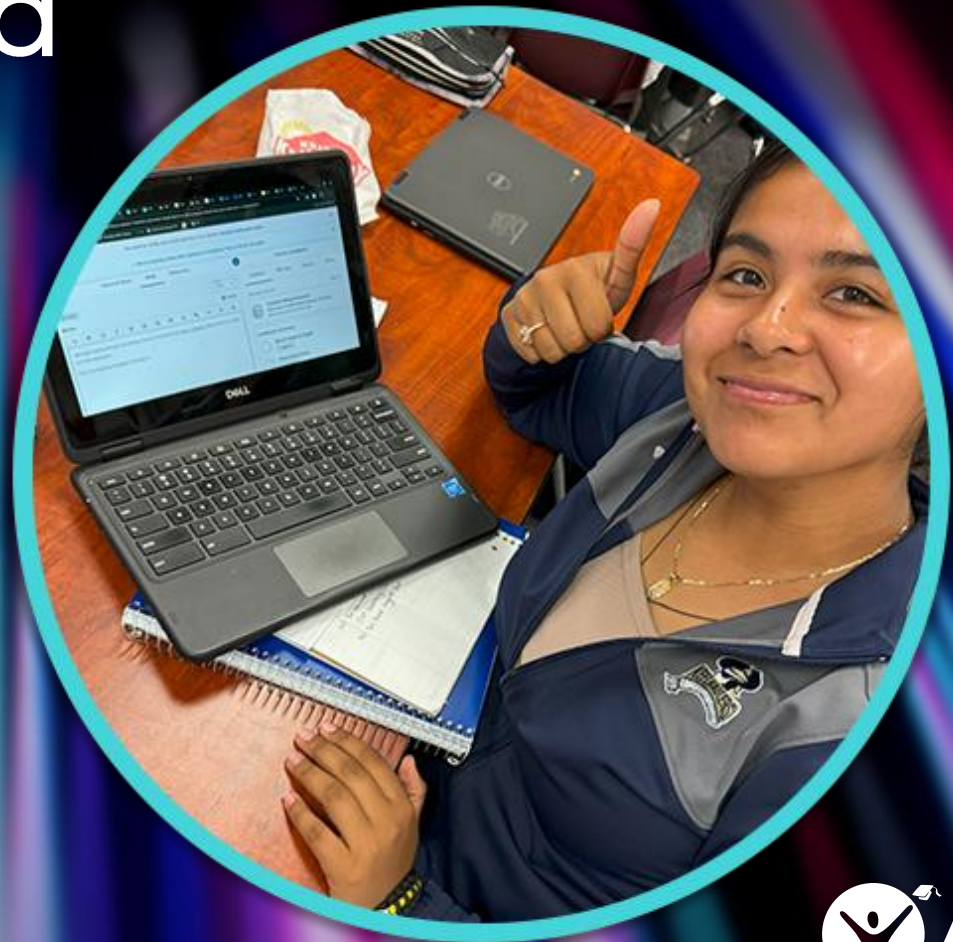


The Classroom of the Future: Integrating AI to Promote Student Agency and AI Literacy



Our Presenters



**Kelsey
Behringer**

CEO
Packback



**Michelle
Brummond**

Learning Designer
AVID Center



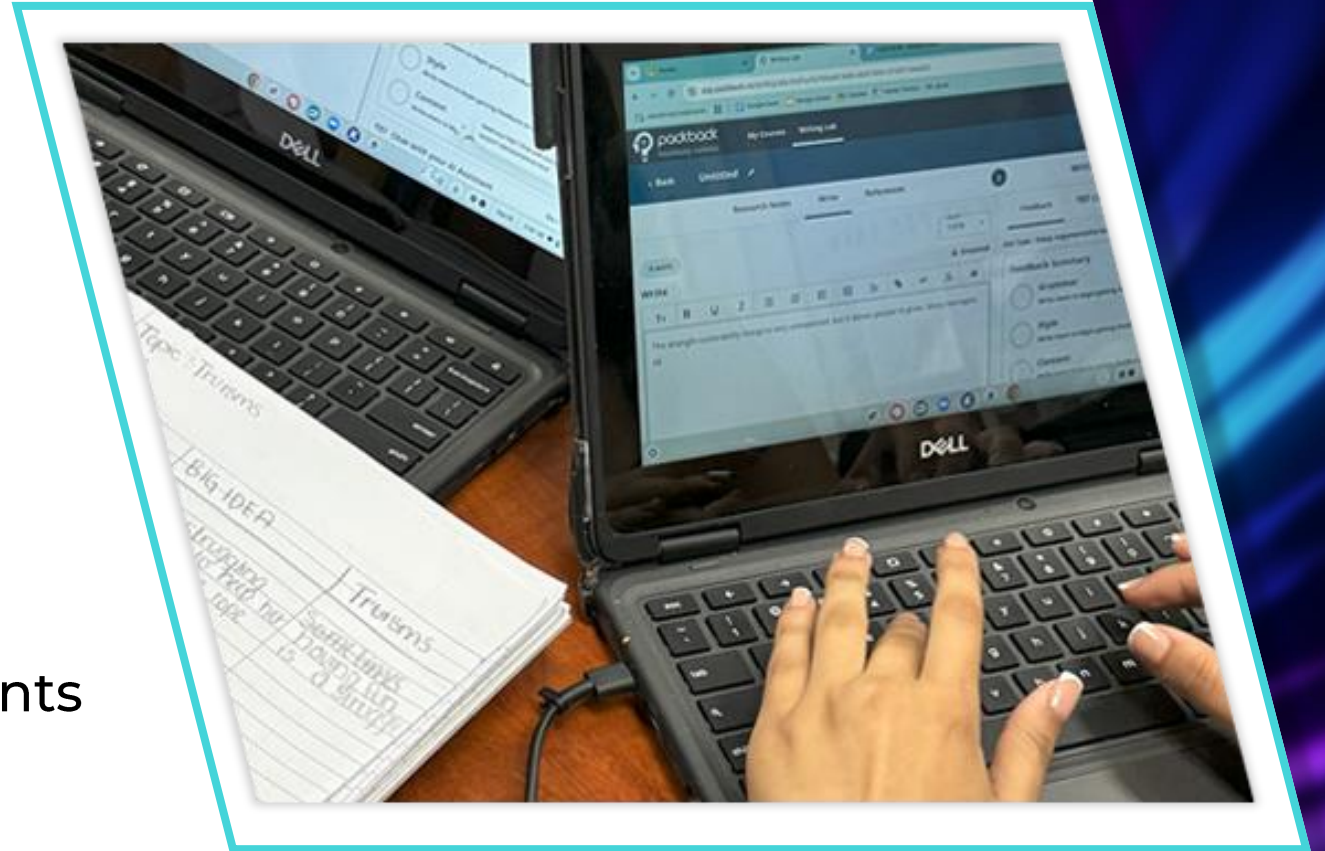
Featuring Our Special Guest

Kathleen Giannandrea

AVID District Coordinator
Orosi High School

Our Agenda

- AI's Place in the Classroom
- How to Use AI Transparently
- The Impact AI Has on Student Voice and Agency
- The Importance of AI Literacy in the Digital Age
- Using Instructional AI to Scaffold and Prepare Students





**What
are your
thoughts?**

AI's Place in the Classroom

Falling Behind Worries

Among surveyed institutions,

73% cited student AI use

68% cited AI misuse risks

as key motivators for strategic planning.¹

Belief in AI's Impact

Among surveyed educators,

55%

believe AI will positively impact the classroom.

88%

believe AI can positively impact accessibility.

18% reported using AI for teaching and **15%** have used AI at least once.²

How to Use and Cite AI **TRANSPARENTLY**

TOOL

AI should be used as a tool, not as a replacement for human interaction or human intelligence.

Using AI transparently means using it alongside humans in the learning process as an accountability buddy—not as the driver.

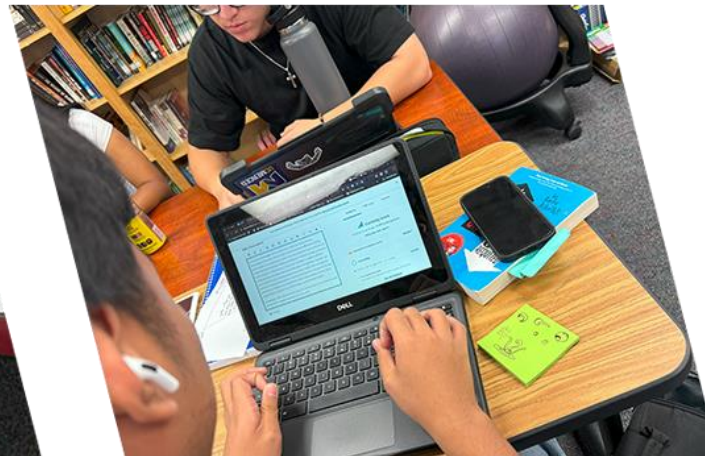
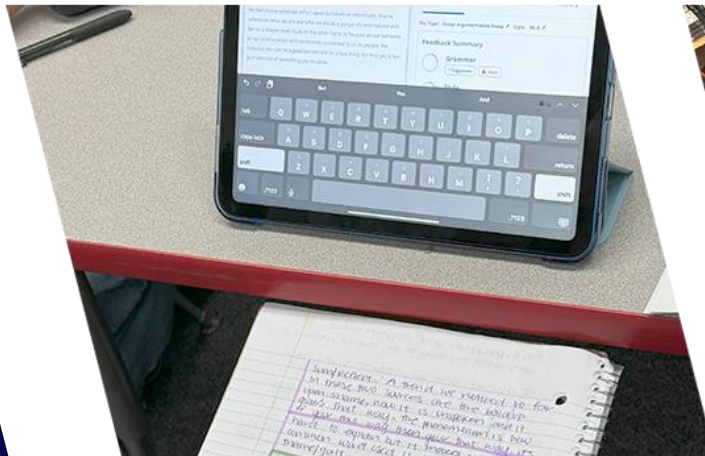
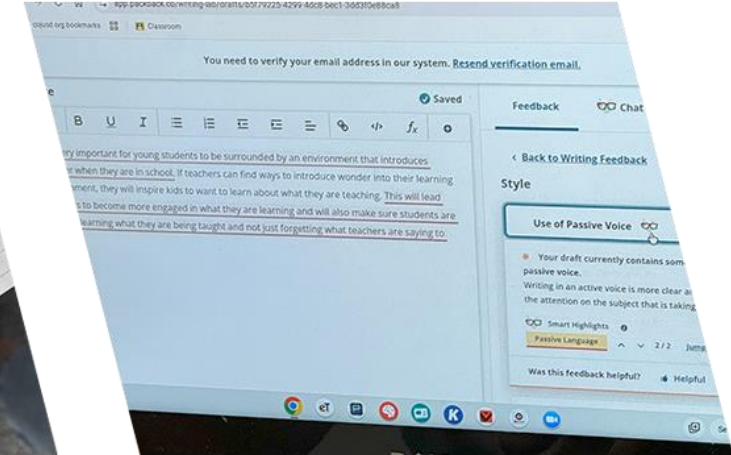
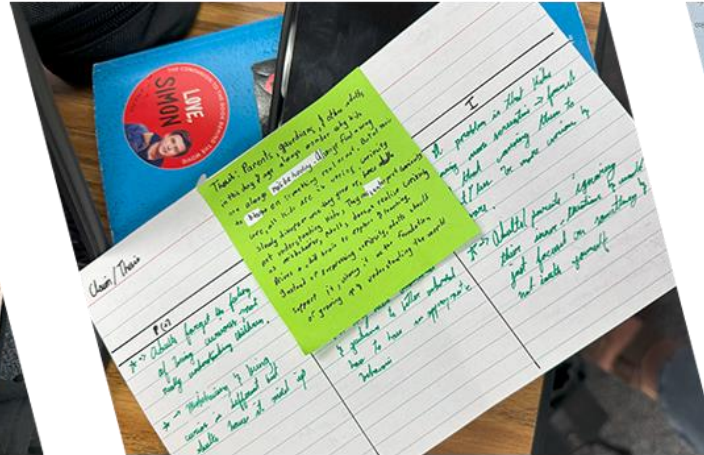
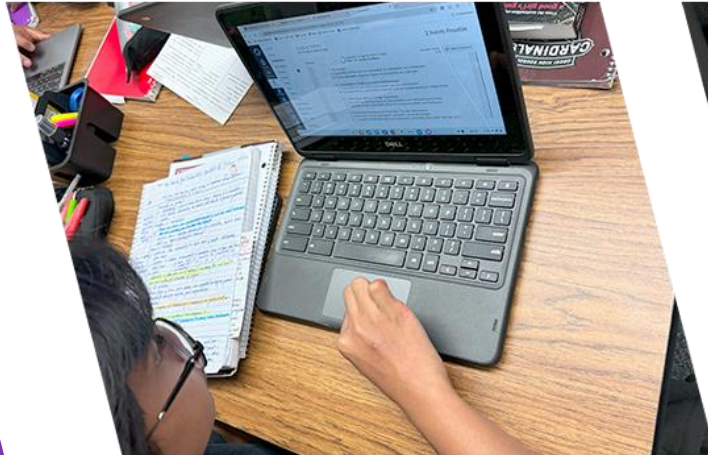
Educators should create a transparent classroom policy that addresses potential problems and offers guidance for the acceptable use of AI tools.

This will allow students to explore and understand the tool, teach them how to use AI honestly, and offer clarity.

POLICY

Case Study

Kathleen Giannandrea
AVID District Coordinator
Orosi High School



Photos courtesy of
Orosi High School.

The Impact AI Has on Student Voice and Agency

Empowering Student Voices

With an increase in AI Literacy, students will make more informed decisions about the ethical architecture of their learning experience.

Massachusetts Institute of Technology

MIT News

ON CAMPUS AND AROUND THE WORLD

“They can see themselves shaping the world they live in”

Developed by MIT RAISE, the Day of AI curriculum empowers K-12 students to collaborate on local and global challenges using AI.

Katherine Ouellette | MIT Open Learning
July 8, 2024

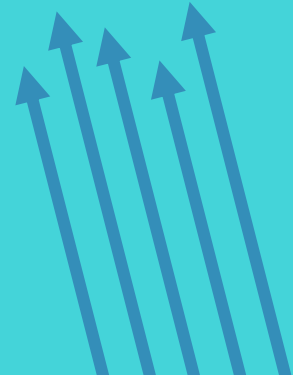




**What
are your
thoughts?**

The Importance of AI Literacy in the Digital Age

Business spending to adopt and use AI in existing operations and to deliver better products and services is expected to...



...drive 3.5% of global GDP by 2030, adding \$19.9 trillion to the world economy.³

³ International Data Corporation

AI Literacy Involves:

- Knowing the basics of AI
- Knowing the uses of AI in the world
- Prompting AI
- Being aware of the ethical considerations involved with its use
- Critically evaluating information and content generated by AI

Next Steps...

